

SHARP

AL-1553
A4 Digital Multifunctional System



AL-1553

RELIABLE MULTIFUNCTIONAL PERFORMANCE
WITH AUTOMATIC DOUBLE SIDED
COPIES/PRINTS AND FULL COLOUR SCANNING



AL-1553

The ideal copier for small offices, the AL-1553 gives you professional quality documents at a productive pace. For enhanced copying efficiency, it's equipped with convenient multi-bypass, duplex and a document feeder. What's more, it also functions as a convenient laser printer and full colour scanner, complete with versatile document management software for your PC.

Speedy Copying with SOPM and SPF

The AL-1553's Scan Once/Print Many (SOPM) function stores a scanned original into memory to quickly produce up to 99 sets of documents at a continuous copy rate of 15 cpm*. Plus its quick first copy time of just 9.6 seconds saves valuable time when performing multiple short run jobs. A Single Pass Feeder (SPF) is equipped as standard, providing efficient document feeding of up to 30 sheets.

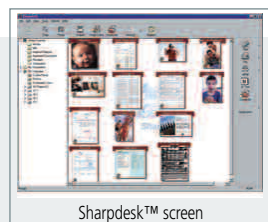
**Based on A4 or smaller documents using the same size copy mode.*

High Performance Laser Printing

Featuring a built in PC interface, the AL-1553 can print from computers running popular Windows® operating systems at a rapid 12 ppm (max.). A number of convenient printing functions are also available.

Full Colour Scanning with Bundled Software

The AL-1553 also works as a full colour scanner, complete with powerful utility software. Button Manager lets you scan documents directly into applications on your PC. Up to six pre-registered applications are available, including Sharpdesk™, e-mail, PC-fax, OCR, Microsoft® Word and a different application of your choice. Operation is quick and easy – simply press the Scan button, select an application from the scan menu and press Start! Sharpdesk™ desktop document management software allows you to easily browse through, edit, sort and file your scanned documents.



600 dpi Printing Resolution

The AL-1553 uses a high performance 600 dpi digital laser printing engine to produce ultra clear printouts and copies. This high printing resolution ensures that all details of the original document, including fine text, charts, and even photographs, come out clear and legible.

Efficient Duplex Copying and Printing

The AL-1553 comes standard with a single pass duplex module that provides fast and reliable duplex copying and printing, effectively reducing paper costs as well as saving filing space. Copies can be made from single sided originals through the SPF.

Other Key Features

- Digital Automatic Exposure Control ensures optimum copy quality
- 250 sheet paper tray and 50 sheet multi-bypass feeder
- Wide zoom range from 25 to 400% with 5 preset ratios
- Dual PC interface: USB 1.1 and IEEE 1284
- Space saving interior document tray
- Energy efficient operation with Pre-Heat and Auto Power Shut-Off modes
- Cost efficient Toner Save mode

Specifications

GENERAL	
Type	Desktop
Paper size	Max. A4, min. A6
Paper capacity	300 sheets (250 sheet paper tray, 50 sheet multi-bypass feeder)
First copy time*1	9.6 seconds (Normal mode) 25.0 seconds (Pre-Heat mode) 40.0 seconds (Auto Power Shut-Off mode)
Warm-up time*1	0 seconds
Power requirements	Rated local AC voltage ±10%, 50/60 Hz
Power consumption	Max. 1.0 kW
Dimensions (W x D x H)	518 x 492.5 x 380.4 mm
Duplex	Copying and Printing
Weight	Approx. 19 kg without toner cartridge
COPIER	
Copy speed	15 cpm (A4 size)
Original size	Max. A4
Continuous copy	Max. 99 copies
Resolution	Scan: AE/Manual: 600 x 300 dpi (default)*2 Photo: 600 x 600 dpi Print: 600 dpi
Zoom range	From 25 to 400%
Fixed copy ratios	25, 70, 86, 100, 141, 400%
GDI PRINTER	
Printer speed	Max. 12 ppm (A4 size) for both IEEE 1284 and USB 1.1 connections
Memory	8 MB
Resolution	600 dpi
Interface	USB 1.1 x 1, IEEE 1284 bi-directional x 1
Supported OS	Windows NT® 4.0 (Workstation SP), Windows® 2000 (Professional), Windows® XP (Home/Professional), Windows® 95/98/Me
COLOUR SCANNER	
Resolution	600 x 1,200 dpi (setting range: 50 to 9,600 dpi*3)
Colour depth	24 bits (8 bits per RGB colour)
Scan speed	Max. 2.88 ms/line
Protocol	TWAIN, WIA (Windows XP), STI
Interface	USB 1.1
Supported	OS Windows 98/Me, Windows XP, Windows 2000
Scanner utilities	Button Manager, Sharpdesk™

*1 At rated voltage, 20°C (68°F), 65% RH.

*2 Can be changed to 600 x 600 dpi by user simulation.

*3 Resolutions higher than 600 dpi are interpolated.



Design and specifications are subject to change without prior notice.

The ENERGY STAR logo is a certification mark and may only be used to certify specific products that have been determined to meet the ENERGY STAR programme requirements. ENERGY STAR is a US registered mark. The ENERGY STAR guidelines apply to products only in the US, Europe, Australia, New Zealand and Japan.

Windows and Windows NT are registered trademarks of Microsoft Corporation. All other company names, product names and logos are trademarks or registered trademarks of their respective owners. All trademarks acknowledged E&OE.

SHARP

Sharp Electronics (UK) Limited,
Sherbourne House, Croxley Business Park,
Watford, Hertfordshire WD18 8WT
Telephone: 0800 915 4045
Website: www.sharpinbusiness.co.uk

© Copyright 2005 Sharp Electronics (UK) Limited.