

SHARP

AM-300
Digital Multifunction System



AM-300

COPY, PRINT, COLOUR SCAN

The AM-300 provides simplicity and productivity in a compact multifunctional design.



AM-300

The AM-300 is a multifunctional device that delivers 3-in-1 functionality that to your home or office. Within its space saving design, the AM-300 incorporates convenient features such as face down printing and 600 x 600 dpi colour scanner. The AM-300 is an excellent choice.

Copy

Productive Copying

The AM-300's efficient copy rate of 12 copies per minute*¹ enables you to finish your copy jobs sooner and move onto the next task on your list.

Convenient Paper Management

Despite its compact size, the AM-300 boasts a paper capacity of 250 sheets*², so you won't need to constantly refill the paper drawer. Further paper management convenience is provided by the automatic document feeder, which holds up to 20 pages*² of documents.

*¹ Copy speed is based on the continuous print rate after the first page is printed.

*² 80 g/m² A4 copier paper at room temperature.

Print

Speedy Output

When it's time to print out a file from your PC, the AM-300 delivers timely satisfaction to streamline your office documentation. With its 12 pages per minute*¹ printing output, boosted by a fast USB 2.0*² interface, the AM-300 effortlessly handles the typical printing load of a small office.

600 x 600 dpi Resolution

The 600 x 600 dpi resolution of the AM-300's laser printer engine means your printed documents come out looking crisp, professional and easy to read.

Versatile Bypass Tray

Tucked away discreetly on the side of the AM-300 is a handy bypass tray, which allows you to throughput envelopes, postcards and other one off documents.

*¹ Print speed is based on the continuous print rate after the first page is printed.

*² USB 2.0 Hi-Speed performance requires Windows® XP Service Pack 1 or Windows® 2000 Service Pack 4 with pre installed USB 2.0 port.

Scan

Full Colour Scanning

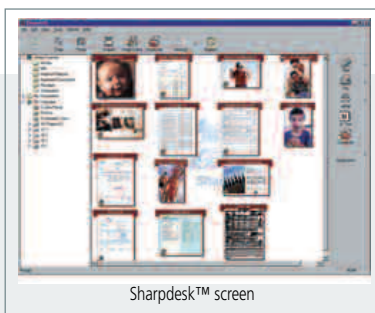
When you use the AM-300 to scan original documents onto your PC, a wide spectrum of colours is faithfully retained, with up to 600 x 600 dpi resolution. You can then use those scanned files to create vivid, high impact colour documents or presentation materials.

Sharpdesk™ for File Management

Sharpdesk™ software brings a new level of document integration to your PC. It enables you to effortlessly organise, edit and combine over 200 different file types on your desktop. Scanned files can be printed, e-mailed or archived, depending on your specific requirements.

Button Manager

Using the AM-300's Button Manager, you can quickly and easily scan a document directly into an application on your PC. This convenience is extended to a range of applications, including Sharpdesk™, e-mail, Microsoft® Word and OCR.



Sharpdesk™ screen

Specifications

GENERAL

Type	Digital Laser MFP
Paper size	Paper tray: A4; Bypass tray: A5/A4 (paper); COM 10 (envelope); European postcard (A6 card)
Paper capacity	250 sheets* ¹
First copy time	Approx 50 seconds
Power requirements	Rated local AC voltage ±10%, 50/60 Hz
Power consumption	Standby 9 W, Max 870 W
Dimensions (W x D x H)	475 x 420 x 370 mm
Weight	Approx. 12.7 kg with supplies

COPIER

Copy speed	12 copies per minute* ²
Continuous copy	Max. 99 copies
Copy Resolution	600 x 600 dpi
Copy Reduction/ Enlargement	25 to 400%
Fixed copy ratios	25, 50, 69, 100, 143, 200, 400%

GDI PRINTER

Print speed	12 pages per minute* ²
Print Resolution	600 x 600 dpi
Interface	USB 2.0* ³
Supported OS	Windows® XP/2000/Me* ⁴

COLOUR SCANNER

Scan type	Colour CIS
Scan Resolution	600 x 600 dpi
Compatibility	TWAIN, WIA (Windows Image Acquisition in Windows XP)
Interface	USB 2.0* ³
Supported OS	Windows® XP/2000/Me* ⁴
Scan Applications	TWAIN/WIA driver, Button Manager, Sharpdesk™

*¹ 80g/m² A4 copier paper at room temperature.

*² Print and copy speeds are based on the continuous print rate after the first page is printed.

*³ USB 2.0 Hi-speed performance requires Windows® XP Service Pack 1 or Windows® 2000 Service Pack 4 with pre-installed USB 2.0 port.

*⁴ Windows® Me does not support Arabic, Thai or Hebrew.



Design and specifications are subject to change without prior notice.

The ENERGY STAR logo is a certification mark and may only be used to certify specific products that have been determined to meet the ENERGY STAR programme requirements. ENERGY STAR is a US registered mark. The ENERGY STAR guidelines apply to products only in the US, Europe, Australia, New Zealand and Japan.

Windows and Windows NT are registered trademarks of Microsoft Corporation. All other company names, product names and logotypes are trademarks or registered trademarks of their respective owners. All trademarks acknowledged E&OE.

SHARP

Sharp Electronics (UK) Limited, Sherbourne House,
Croxley Business Park, Watford, Hertfordshire WD18 8WT
Telephone: 0800 915 4045 Website: www.sharpinbusiness.co.uk
© Copyright 2005 Sharp Electronics (UK) Limited.