

# SHARP

AL-1644  
A3 Mono Laser Copier/Printer/Scanner



## AL-1644

COMPACT AND CONVENIENT A3 COPYING,  
PRINTING & SCANNING FOR YOUR BUSINESS



# AL-1644

With its automatic 3-way paper feeding, the AL-1644 delivers impressive copying/printing performance from a compact package. The space-saving internal document trays make placement easy and keep the footprint to a minimum. The 16 pages per minute speed and 600 dpi resolution deliver high quality output at impressive speed, while the Scan Once/Print many function and Document Feeder (SPF) maximise copying productivity. The AL-1644, bringing compact and convenient A3 copying and printing power to your office.

## Productive Copying

With a continuous copy rate of 16 pages per minute, the AL-1644 can finish even large tasks quickly. And waiting time at the AL-1644 is minimal, as its first copy time is only 7.2 seconds\*.

\*When copying onto A4 paper fed from the paper tray.

## Single Pass Feeder with Scan Once/Print Many

The AL-1644 comes standard with a built-in 40 sheet Single Pass Feeder (SPF) that can automatically feed in and make copies from single sided originals, eliminating the need to place each page by hand. The Scan Once/Print Many (SOPM) function stores a scanned original into memory to quickly produce up to 99 copies.

## High Performance Laser Printing

Featuring a built-in PC interface, the AL-1644 can print from computers running popular Windows® operating systems at a rapid 12 ppm (max.). A number of convenient printing functions are also available.

## Convenient Automatic 3-Way Paper Feeding

The AL-1644 features two convenient 250-sheet front loading paper trays as well as a 100-sheet multi-bypass feeder – useful for larger copy jobs, and a real time saver when frequently copying different-sized sheets. All the standard paper sizes can be copied with ease\*.

\*Front loading paper tray: A3 to A5. Multi-bypass feeder: A3 to A6.

## Digital Automatic Exposure Control

To produce the best copies possible, the AL-1644's Digital Auto Exposure Mode automatically adjusts darkness and brightness levels for optimum contrast. Text and photos are distinguished automatically to maintain ideal contrast levels and to accurately reproduce fine details from the original document. Exposure levels can also be adjusted manually.

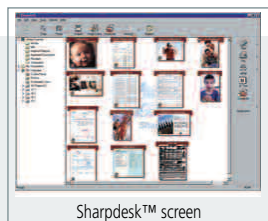
## True 600 dpi Digital Laser Copying

The AL-1644's laser copier engine produces superb looking documents at true 600 dpi. Fine text comes out clear and legible and details are faithfully reproduced, even at the edges of copies.

## Full-Colour Scanning with Bundled Software

The AL-1644 also works as a 600 x 1200dpi full-colour scanner, complete with powerful utility software. Button Manager lets you scan documents directly into applications on your PC. Up to six pre-registered applications are available,

including Sharpdesk™, e-mail, PC-fax, OCR, Microsoft® Word and a different application of your choice. Operation is quick and easy - simply press the Scan button, select an application from the scan menu and press Start! Sharpdesk™ desktop document management software allows you to easily browse through, edit, sort and file your scanned documents.



Sharpdesk™ screen

## More Room in the Office

You'll find that the AL-1644 maximises features while occupying a small footprint. Its internal paper trays eliminate the need for a protruding output tray. Making placement easy; its flat sides and compact size allow it to be placed where a conventional copier could never go.

## Specifications

### GENERAL

Type	Desktop
Paper size	Max. A3, min. A6
Paper capacity	600 sheets (two 250 sheet paper trays, 100 sheet multi-bypass feeder)
First copy time*1	7.2 seconds
Warm-up time*1	45 seconds
Power requirements	Rated local AC voltage ±10%, 50/60 Hz
Power consumption	Max. 1.2 kW
Dimensions (W x D x H)	518 x 492.5 x 380.4 mm
Weight	Approx. 41.5 kg

### COPIER

Copy speed	16 cpm (A4 size), 9cpm (A3 size)
Original size	Max. A3
Continuous copy	Max. 99 copies
Resolution	Scan: AE/Manual: 600 x 600 dpi Print: 600 dpi
Zoom range	From 25 to 400%
Fixed copy ratios	25, 70, 86, 100, 141, 400% in the metric system

### GDI PRINTER

Printer speed	Max. 12 ppm (A4 size) for both IEEE 1284 and USB 1.1 connections
Resolution	600 dpi
Interface	USB 1.1 x 1, IEEE 1284 bi-directional x 1
Supported OS	Windows NT® 4.0 (Workstation SP), Windows® 2000 (Professional), Windows® XP (Home/Professional), Windows® 95/98/Me

### COLOUR SCANNER

Resolution	600 x 1,200 dpi (setting range: 50 to 9,600 dpi*2)
Colour depth	24 bits (8 bits per RGB colour)
Protocol	TWAIN, WIA (Windows XP), STI
Interface	USB 1.1
Supported	OS Windows 98/Me, Windows XP, Windows 2000
Scanner utilities	Button Manager, Sharpdesk™

\*1 At rated voltage, 20°C (68°F), 65% RH.

\*2 Resolutions higher than 600 dpi are interpolated.



Design and specifications are subject to change without prior notice.

The ENERGY STAR logo is a certification mark and may only be used to certify specific products that have been determined to meet the ENERGY STAR programme requirements. ENERGY STAR is a US registered mark. The ENERGY STAR guidelines apply to products only in the US, Europe, Australia, New Zealand and Japan.

Windows and Windows NT are registered trademarks of Microsoft Corporation. All other company names, product names and logotypes are trademarks or registered trademarks of their respective owners. All trademarks acknowledged E&OE.

Sharp Electronics (UK) Limited,  
Sherbourne House, Croxley Business Park,  
Watford, Hertfordshire WD18 8WT  
Telephone: 0800 915 4045  
Website: [www.sharpinbusiness.co.uk](http://www.sharpinbusiness.co.uk)

© Copyright 2004 Sharp Electronics (UK) Limited.

# SHARP