

SHARP

AL-1566
A4 Digital Multifunctional System



AL-1566

PRINTING, COLOUR SCANNING, COPYING AND
FAXING IN A COMPACT PACKAGE



AL-1566

The AL-1566 is an ideal document solution for the small office with a heavy workload. The standard reversing single pass feeder and duplex module make light work of complex office jobs. With standard PC printing, faxing and full-colour scanning functions the AL-1566 satisfies all your imaging needs in one convenient machine.

Speedy Copying with SOPM

The AL-1566's Scan Once/Print Many (SOPM) function and Electronic Sorting* stores a scanned original into memory to quickly produce up to 99 copies of a document at a continuous copy rate of 15 cpm**. Plus its quick first copy time of just 9.6 seconds saves valuable time when performing multiple short-run jobs.

*The Electronic Sorting function automatically collates multiple sets of copies in page order without the aid of a sorter.

**Based on A4 or smaller documents using the same size copy mode.

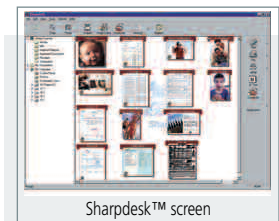
Efficient Duplex Copying and RSPF

The AL-1566 comes standard with a single-pass duplex module that provides speedy and reliable duplex copying, effectively reducing paper costs as well as saving filing space. The built-in 30 sheet Reversing Single Pass Feeder (RSPF) can automatically feed in and make copies from single or two sided originals, eliminating the need to place and turn each page by hand.

High-Performance Laser Printing

Featuring a built-in PC interface, the AL-1566 can print from computers running popular Windows® operating systems at a rapid 15 ppm (max.). A number of convenient printing functions are available, including duplex printing and Network Printing.

Full-Colour Scanning with Bundled Software



Sharpdesk™ screen

The AL-1566 also works as a full-colour scanner, complete with powerful utility software. Button Manager lets you scan documents directly into applications on your PC. Up to six pre-registered applications are available, including Sharpdesk™, e-mail, PC-fax, OCR, Microsoft® Word and a different application of your choice. Operation is quick and easy – simply press the Scan button, select an application from the scan menu and press Start! Sharpdesk™ desktop

document management software allows you to easily browse through, edit, sort and file your scanned documents.

600 dpi Printing Resolution

The AL-1566 uses a high-performance 600 dpi digital laser printing engine to produce ultra clear printouts and copies. This high printing resolution ensures that all details of the original document, including fine text, charts, and even photographs, come out clear and legible.

High Speed Fax Operation

The Super G3 Fax enables the AL-1566 to act as a fax machine featuring a fast modem speed of 33.6Kbps. Using JBIG data compression means you can send an A4 size page in approx. 3 seconds*. And the RSPF allows scanning of both sides of a two-sided document.

*Based on ITU-T test chart No. 1 at standard resolution.

Other Key Features

- Digital Automatic Exposure Control ensures optimum copy quality
- Wide zoom range from 25 to 400% with 5 preset ratios
- One 250 sheet paper tray and 50 sheet multi-bypass feeder
- Space-saving interior document tray
- Energy-efficient operation with Pre-Heat and Auto Power Shut-Off modes
- Cost-efficient Toner Save mode

Specifications

GENERAL

Type	Desktop
Paper size	Max. A4, min. A6
Paper capacity	300 sheets (one 250 sheet paper tray, 50 sheet multi-bypass feeder)
First copy time*1	9.6 seconds (Normal mode), 25.0 seconds (Pre-Heat mode) 40.0 seconds (Auto Power Shut-Off mode)
Warm-up time*1	0 seconds
Power requirements	Rated local AC voltage ±10%, 50/60 Hz
Power consumption	Max. 1.0 kW
Dimensions (W x D x H)	518 x 503 x 465 mm
Duplex	Copying and Printing
Weight	Approx. 20.5 kg without toner cartridge

COPIER

Copy speed	15 cpm (A4 size)
Original size	Max. A4
Continuous copy	Max. 99 copies
Resolution	Scan: AE/Manual: 600 x 300 dpi (default)*2 Photo: 600 x 600 dpi Print: 600 dpi
Zoom range	From 25 to 400%
Fixed copy ratios	25, 70, 81, 100, 141, 400% in the metric system

GDI PRINTER

Printer speed	Max. 15 ppm (A4 size) for both IEEE 1284 and USB 1.1 connections
Memory	8 MB
Resolution	600 dpi
Interface	USB 2.0, 10/100BaseTX (Network SPLIC Printing)
Supported OS	Windows NT® 4.0 (Workstation SP), Windows® 2000 (Professional), Windows® XP (Home/Professional), Windows® 95/98/Me

FAX

Compatibility	Super G3
Modem Speed Max.	33,600 bps
Document Size Max.	A4
Compression Method	MH,MR,MMR,JBIG
One Touch Dials	18
Broadcast Transmission	Max. 50 Destinations

COLOUR SCANNER

Resolution	600 x 1,200 dpi (setting range: 50 to 9,600 dpi*3)
Colour depth	24 bits (8 bits per RGB colour)
Protocol	TWAIN, WIA (Windows XP), STI
Interface	USB 2.0
Supported OS	OS Windows 98/Me, Windows XP, Windows 2000
Scanner utilities	Button Manager, Sharpdesk™

*1 At rated voltage, 20°C (68°F), 65% RH.

*2 Can be changed to 600 x 600 dpi by user simulation.

*3 Resolutions higher than 600 dpi are interpolated.



Design and specifications are subject to change without prior notice.

The ENERGY STAR logo is a certification mark and may only be used to certify specific products that have been determined to meet the ENERGY STAR programme requirements. ENERGY STAR is a US registered mark. The ENERGY STAR guidelines apply to products only in the US, Europe, Australia, New Zealand and Japan.

Windows and Windows NT are registered trademarks of Microsoft Corporation. All other company names, product names and logotypes are trademarks or registered trademarks of their respective owners. All trademarks acknowledged E&OE.

SHARP

Sharp Electronics (UK) Limited,
Sherbourne House, Croxley Business Park,
Watford, Hertfordshire WD18 8WT
Telephone: 0800 915 4045
Website: www.sharpinbusiness.co.uk

© Copyright 2004 Sharp Electronics (UK) Limited.